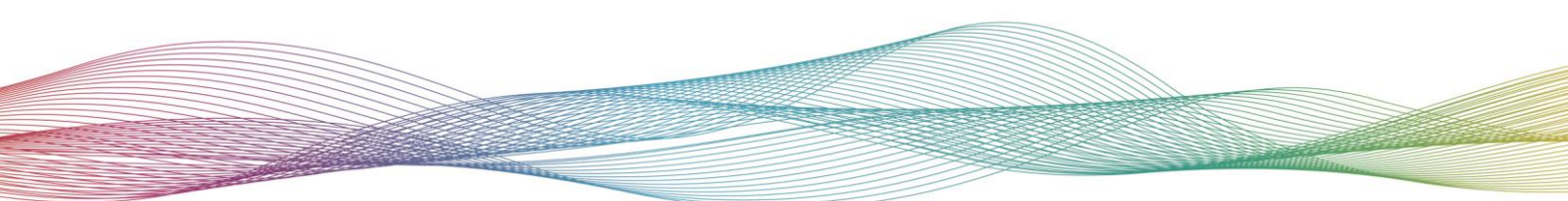




**REPORT TO: LANCASHIRE AND SOUTH CUMBRIA MEDICINES MANAGEMENT GROUP
TO BE HELD ON: 12th December 2024**

Agenda Item Number:	2024/251
Report Title:	Pathways and Guidance Workplan
Author:	Brent Horrell
Presented by:	Brent Horrell
Purpose of the Report:	Information
Previously Considered By:	N/A
Executive Summary:	The workplan items are covered on page 2 for consideration by LSCMMG.



Format	Existing / new	Medicine entry name / Guideline Name	Grade	Where to next?	Date to go to LSCMMG
Guidance Document	New	Osteoporosis - secondary prevention pathway – request from rheumatology alliance	Major	LSCMMG – for prioritisation	Dec 24
Shared care	Existing	DMARD Shared care documents – North West Format still being worked through with Rheumatology alliance.	Moderate	LSCMMG – for discussion re extending expiry dates	Dec 24
Guidance Document	Existing	Ophthalmology Macular Pathway – On Dec 24 LSCMMG agenda	Major	LSCMMG	Dec 24
Guidance Document	Existing	Good prescribing in primary care – On Dec 24 LSCMMG agenda	Moderate	LSCMMG	Dec 24
Guidance Document	Existing	Vitamins in Bariatric surgery – Private prescribing issue being picked up alongside good prescribing in primary care	Moderate	LSCMMG	Dec 24
Guidance Document	Existing	Prescribing policy for specialist infant formula feeds – update – awaiting final document from specialist group	Moderate	LSCMMG	Jan 25
Shared care	New	Dapsone for dermatoses	Moderate	LSCMMG	Jan 25
Guidance Document	New	Psoriasis Biologic and High-Cost Drug Commissioning Pathway – Discussed at November LSCMMG – to be reviewed and brought to a subsequent LSCMMG.	Moderate	LSCMMG	Jan 25
Guidance Document	Existing	Patient opioid agreement form – Considered at November LSCMMG – to be updated and come to a subsequent LSCMMG	Moderate	LSCMMG	Feb 25
Guidance Document	New	Melatonin Pathway	Major	LSCMMG	Feb 25
Guidance Document	New	Benzodiazepine withdrawal guideline	Moderate	LSCMMG	Feb 25
Guidance Document	New	Naloxone injection – information sent out in GP bulletin – current Red RAG rating – BH and FP to meet in Jan to start discussions with commissioners	Moderate	LSCMMG	On hold
Guidance Document	Existing	Care home guidance –Shropshire guidance being updated – timescales to be confirmed	Moderate	LSCMMG	On hold
Guidance Document	Existing	GI High Cost Drugs pathway – awaiting publication of British Society of Gastroenterology IBD guidance	Moderate	LSCMMG	On hold
Prescriber information leaflet	New	Azithromycin prescriber information sheet	Moderate	On hold due to ongoing GP industrial action	On hold
Shared care	New	Domperidone shared care	Moderate	On hold due to ongoing GP industrial action	On hold

Shared care	New	Sodium zirconium cyclosilicate shared care	Moderate	On hold due to ongoing GP industrial action	On hold
-------------	-----	--	----------	---	---------